

Theme from "The Office"

Flute & Oboe

Mr. Curley

♩=150

4

9

Theme from "The Office"

Clarinet in B \flat 1

Mr. Curley

If you can't play these high C's, let me know,
and I'll send you a copy of this music down lower

$\text{♩} = 150$

4

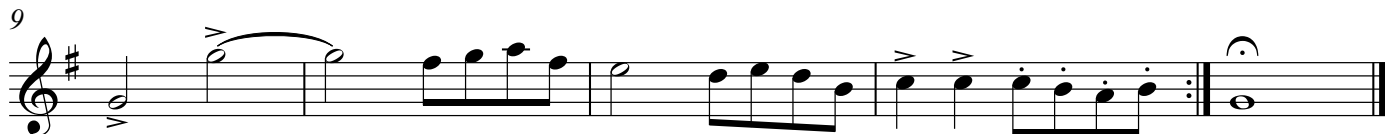
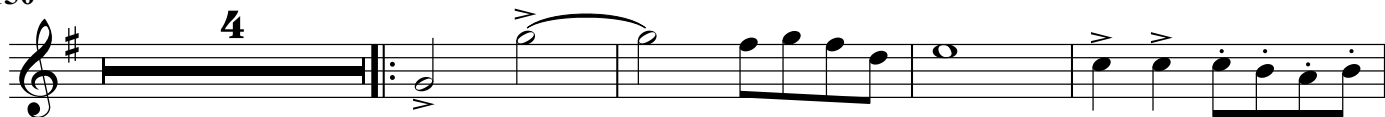
9

Theme from "The Office"

Alto Saxophone

Mr. Curley

♩=150



Theme from "The Office"

Tenor Saxophone

Mr. Curley

♩=150

4

9

Theme from "The Office"

Trumpet in B \flat 1

Mr. Curley

$\text{♩} = 150$

4

9

Theme from "The Office"

Horn in F

Mr. Curley

$\text{♩} = 150$

4

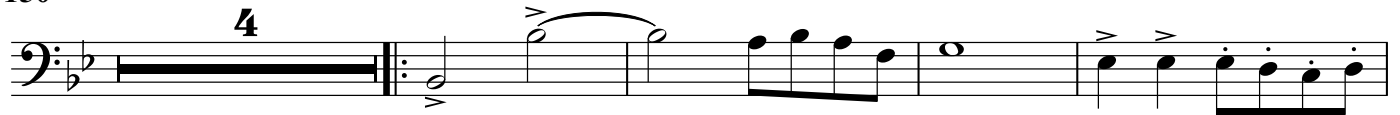
9

Theme from "The Office"

Trombone & Baritone

Mr. Curley

♩=150



Theme from "The Office"

Glockenspiel

Mr. Curley

♩=150

4

9

Theme from "The Office"

Snare Drum

Mr. Curley

♩=150

4



8



11



Piano

Theme from "The Office"

Mr. Curley

♩=150

Measures 1-5 of the piano score. The music is in 4/4 time with a key signature of two flats (B-flat and E-flat). The right hand features a sequence of chords and eighth notes, while the left hand plays a steady eighth-note accompaniment. A repeat sign is present at the end of measure 5, followed by a fermata over a whole note in measure 6.

Measures 6-9 of the piano score. The right hand continues with eighth-note patterns and chords, including accents and slurs. The left hand maintains the eighth-note accompaniment. A fermata is placed over a whole note in measure 9.

Measures 10-13 of the piano score. The right hand features eighth-note patterns and chords with accents. The left hand continues the eighth-note accompaniment. The piece concludes with a double bar line and a fermata over a whole note in measure 13.